



Cranford C E Primary School



**Working together for all children to
prosper, be full of hope and
be excited about their future.**



School Information

Address: Church Lane
Cranford
Kettering
Northamptonshire
NN14 4XP

Telephone: (01536) 330300

Website: www.cranford.northants.sch.uk

Twitter



[@SchoolCranford](https://twitter.com/SchoolCranford)

Pupils on roll: 100

Type and age range: Mixed primary school 4-11 years

Principal: Mr Rob Tyman

Executive Headteacher: Mrs Erica Holt

Chair of Governors: Lisa Howkins



Working together
for all children to
prosper, be full of
hope and be
excited about
their future.





Working together
for all children to
prosper, be full of
hope and be
excited about
their future.

Thank you for your interest in our school.

This prospectus outlines the ethos and principles of our school, whilst at the same time aiming to give you the confidence about the journey your child will take with us. We recognise that education is a partnership between the school, its pupils and their families and will work with you to provide the best care, nurture and learning experiences to enable your child to achieve their full potential whilst they are with us.

At Cranford CE Primary School, our pupils are the centre of all we do. We focus on the whole child, aiming to develop them into responsible, caring, successful young members of the community.

Our curriculum has been designed to inspire pupils through challenge, with a range of opportunities included to enrich their learning. Our committed staff are dedicated to providing the best possible experiences for all pupils.

Underpinning all that we do are our core values. These are:

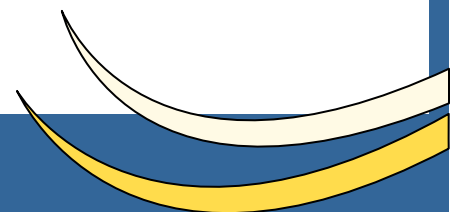
- Respect
- Happiness
- Courage
- Honesty
- Thoughtfulness
- Forgiveness

Our unique, caring, family atmosphere is rooted in these Christian values and underlying Core British Values and is demonstrated in the relationships we foster with each other, the children, their families and our wider community.

We warmly welcome you into our family.

Kind regards

Rob Tyman
Principal



Our school day

07:45 – 08:35	Cranford Breakfast Club <i>Booking required, fee payable</i>
08:35	School gates open
08:35 – 08:45	Morning Registration
08:45 – 10:15	Morning Lessons - Session 1
10:15 – 10:30	Collective Worship
10:30 – 10:45	Morning break
10:45 - 12:15	Morning Lessons - Session 2
12:15 – 13:15	Lunch break
13:15 – 15:15	Afternoon Lessons
15:15	End of school day
15:15 – 17:30	Athena After-School Club <i>Booking required, fee payable</i>

The school gates open at 08:35, where the pupils will be greeted by a member of staff from the school before going to their class. We ask that the children are not left unaccompanied before this 'hand over'. If you need to drop your child off before this time, they should be pre-booked into Breakfast Club (which runs 5 days a week).

At the end of the school day, the school gate will open at 15:10 and parents should wait in the relevant playground for the children to come out of school. For the benefit of all our community please take care when parking and waiting for your children. Please do NOT park and/or turn your car around on our neighbours driveways.

At the main entrance to the school on the High Street, you should not park on the yellow, zig-zag lines or on the solid white line which leads around the bends out of the village. We have an arrangement with the Red Lion pub whereby they allow parents to use their car park at school times. We positively co-operate with the local police in monitoring the situation.



Our school

Our school is in the heart of the beautiful village of Cranford. The school has a long history and this is visible in the unique layout of our school. We have the capacity for 105 pupils with 15 in each year group. We have 4 classes in our school and they are arranged as below:

Acorns	- Reception
Elms	- Year 1 & 2
Sycamores	- Year 3 & 4
Oaks	- Year 5 & 6

A typical lesson in our school will see children working towards a shared learning objective but with the understanding that children will make progress at their own pace and in their own ways. We all learn differently, so we provide learning opportunities that build on the strengths of the individuals. As such, our lessons are differentiated to meet the needs and learning styles of different groups of learners.

Pupils are able to access and use resources to help them in their learning; as a school we actively encourage them to use their own initiative in this and on their wider journey to becoming independent learners.

All children experience an act of Collective Worship each day and on every Friday, there is a Celebration Assembly where Parents/Carers are invited to share achievements with the pupils and staff to celebrate the past week.



Our curriculum

The National Curriculum provides coverage of a broad range of subjects for pupils of a primary age. It comprises of :

- English
- Mathematics
- Science
- Computing
- History
- Geography
- Art and design
- Design Technology
- Music
- Physical Education
- Modern Foreign Languages
- Personal, Social, Health and Citizenship Education.



Religious Education in our school

As a church school, Religious Education is at the foundation of our curriculum for all children. We use the Church of England's Understanding Christianity resources along with others to deliver a balanced curriculum. As a Church school, learning more about our own faith whilst discovering things about other faiths is very important to us.

Collective Worship is an important part of the school day when we meet together as a community, learn from the stories shared in the bible and discuss our school vales and also the fundamental British Values of:

Mutual Respect and tolerance of others

Democracy

Rule of Law

Individual Liberty

(as defined by Ofsted)



As a school, we feel that our Christian Values and British values sit very closely together and both contribute in helping us shape our children into the young adults we want them to become.

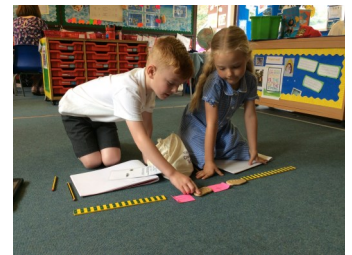


Our Early Years & Foundation Stage

We believe that the foundation stage is crucial in a child's early development and learning. We aim to provide children with a rich variety of teaching and learning experiences that are appropriate to their needs. The foundation stage is about developing key learning skills such as listening, communicating, concentrating, persisting and learning to work and co-operate with others.

There are six areas of learning that make up the foundation stage are;

- Personal, social and emotional development
- Communication, language and literacy
- Problem solving, reasoning and literacy
- Knowledge and understanding of the world
- Physical development
- Creative development



We feel outdoor learning is a vital part of the primary curriculum, in particular in the foundation stage. As such it is carefully integrated into their curriculum and has it's own specially equipped outdoor areas, which look to enhance their learning experiences through play.



Adults assess pupils development and learning needs through the school year. At the start of the autumn term, baseline assessments are carried out on every child. This establishes where they are in aspects of their learning and development and help future planning. Regular discussions are held with parents to discuss children's progress and by the end of the year, the teacher will have built up an accurate profile of each child's development.

Learning outside of the classroom

Educational visits play an essential role in our curriculum and take place on a regular basis. These include studies focused on our local area; participation in sports festivals; trips to museums and attending creative arts events. Additionally, we take our Year 5 & 6 pupils on a residential visit, where they spend a number of nights away from home developing a range of skills including communication and teamwork skills, resilience and self-confidence, skills they will need as they transition to Secondary school.

Assessment

Assessment in our school is ongoing, with Teachers using a combination of Teacher Assessment and more formal assessment (in the form of standardised tests). The class teacher assess each child's development in all subject areas.

Additionally, in the summer term, Years 2 and 6 conduct the compulsory End of Key Stage Standards Assessment Tests (SATs). Each child undertakes a test in reading, writing, punctuation, spelling and grammar and mathematics.

Parents are informed of how well their child is doing through termly parents evenings and at the end of the summer term as part of the annual school report.

Our extra-curricular offerings

We offer a breakfast club that is run by school staff, which opens at 07:45 on a daily basis. This usually operates in Oaks Classroom. This can either be booked in advance or, conveniently, on a "as need" basis. There is also an after-school club which is run by Athena Activities which can be booked in advance by visiting www.athenaactivities.co.uk

In addition to these, we also offer a wide variety of clubs that take place before, during or after school. These are delivered by outside providers and vary during the year. Parents pay these organisations directly. Some of the clubs we offer are:

- Kettering Town Football Club
- Pacesetters Gymnastics
- Pacesetters Dodgeball
- Hot Shots Basketball
- Atomic Science
- Northampton Saints Rugby Club
- Tae Kwon Do
- French Club

Our policies

Safeguarding is paramount to us at Cranford as outlined in our Safeguarding Policy. If you would like to find out more about this, our Special Educational Needs (SEN) provision, our dedication to pupil welfare, behaviour expectations, attendance policy or our admissions policy, we would like to direct you to our website:

www.cranford.northants.sch.uk

These policies are also available from our school office. On the school website, you will find further information which may be of use in addition to news and updates.

Our uniform

Uniform is worn at Cranford C of E Primary School to develop a sense of pride in being a member of the school community. We expect all our children to wear appropriate school uniform which should be neat and tidy at all times.

GIRLS

Winter

- Black or grey skirt/pinafore dress/ trousers
- White school polo shirt
- Navy blue sweatshirt/cardigan or navy school sweatshirt/cardigan



Summer

- Blue gingham dress
- White school polo shirt with smart shorts, skirt or pinafore dress

BOYS

Winter

- Black or grey trousers
- White school polo shirt
- Navy sweatshirt or navy school sweatshirt



Summer

- White school polo shirt
- Black or grey shorts

Shoes

Sensible black shoes must be worn at all times. Girls shoes must be flat and we do not accept trainers to be worn during the school day.

P.E. Kit

The following items are required:

- Cranford t-shirt in house colour to be advised
- Navy shorts
- Plimsolls for indoor PE and trainers for outdoor PE
- Navy long sleeved top and navy joggers for outdoor PE (winter)



All items of clothing must be named. Please keep all PE clothing in a drawstring bag and leave in school.

Items of school uniform with the school logo can be ordered from Karlsports at:
www.ksschoolwear.co.uk

Jewellery must not be worn at any time except for small stud earrings which **MUST** be removed during any sports lesson. Please help us by bearing these issues in mind if you are considering having your child's ears pierced.

Working together for all children to prosper, be full of hope and be excited about their future.

We truly believe that we all have the potential to achieve well and succeed and this belief runs through the core of our school. We celebrate all of our learners and the diversity of our families. We will work in partnership with you to achieve the very best for your child and warmly welcome your involvement.

We hope that this has given you a taste of our school and look forward to seeing you soon. If you have any further questions, do not hesitate to get in touch with the school office.

